

**P.I.T.A**

**Evergreen Sportsmen's Club**

**2022**

**Sept. 3rd, 4th, & 5th**

**Labor Day Shoot**



Go to Evergreen's website to reserve your RV spot! [shootevergreen.com](http://shootevergreen.com)

## **Trophies For Class/Yardage & HOA**

**\*\$1,500 Evergreen Mini Magnum Option\***

**\$8 Option, best bang for your buck! See page 3 for details!**

**Sponsored by: Servpro, Genuine Auto Glass, & Jerry Angiuli**

**\*Doubles League Sept. 2nd\***



**Hosted By: Evergreen Sportsmen's Club**

**12736 Marksman Road SW, Olympia, WA., 98512-9200**

# **Evergreen Trophies:**

## **Labor Day 2022**

- **Singles:** Based on total 200 for events 1 & 5 (A,B,C)
- **Handicap:** Based on total 400 for events 2, 6, 7, & 8 (Short 19-21.5, Mid 22-25.5, Long 26-27)
- **Doubles:** Based on total 200 for events 3 & 4 (A,B,C)
- **HOA events 1-8**



## Evergreen Mini Magnum, \$8.00 Option

**Sponsored By: Serv Pro, Genuine Auto Glass, & Jerry Angiuli**

- Functions similar to the magnum option, however, it is only a requirement to break 49 out of 50 or better for either the front 50 or back 50 ONLY. The middle 50 or any other combination do NOT count.
- Winners gets 50% the pot for the corresponding front or back 50
- The starting pot is \$1,000.00 total, \$500 for Front 50 and \$500 for back 50. Day's entries will also be included.
- If more than one shooter qualifies in the same event for same 50 (front or back), they will split, meaning they will split the \$250, not the total pot. No more than 50% of the pot for any given 50 can be won in an event.
- **Example 1:** Bob breaks a 49 (24, 25) on the first 50. He is entitled to 50% of the pot for front 50. He wins \$250 + days entries.
- **Example 2:** Bob and Tom both break 49 on the first 50. They would split 50% of the pot for the front 50. Bob would get \$125 and Tom would get \$125 + day's entries.

# SERVPRO®

Fire & Water - Cleanup & Restoration™

24 Hour Emergency Service.

Over 1,600 Franchises in North America.

SERVPRO® Franchise System Serving Since 1967.



Like it never even happened.®

SERVPRO® SYSTEM SERVICES

## Restoration:

- Fire, Smoke and Soot
- Water Removal & Dehumidification
- Mold Mitigation & Remediation
- Catastrophic Storm Response
- Move Outs and Contents Restoration
- Electronics and Equipment
- Document Drying
- Contents Claim Inventory Service

## Cleaning:

- Air Ducts & HVAC
- Biohazard, Crime Scene & Vandalism
- Carpet, Upholstery, Drapes & Blinds
- Ceilings, Walls and Hard Floors
- Deodorization

*\*Services vary by location*

**SERVPRO® of  
Puyallup/Sumner  
1-800-SERVPRO**

*Independently Owned and Operated*

**Friday, Sept. 2nd, 2022**

**Registration Beginning at 10am, First 100 starts at 12pm**

---

## **Doubles League!**

**Entrance Fee; Targets per 100.....\$24.00**

**Daily PITA Fee:.....\$4.00**

---

**The below fees are if you want to register the targets for either the WSPITA League, the PITA Doubles League, or both.**

### **WSPITA Doubles League Fees:**

Daily doubles WSPITA fee:.....\$2.00 (This is in addition to the PITA daily fee & PITA DL Daily Fee (if applicable))

WSPITA per 100 targets fee:.....\$2.00

### **PITA Doubles League Fees:**

Daily DL PITA Fee:.....\$2.00 (This is in addition to the PITA daily fee & WSPITA daily fee (if applicable))

PITA per 100 targets fee:.....\$4.00

---





# EINAR JOHANSON

## Window and Door Inc.

### Vinyl, Wood & Fiberglass Windows

**"There is a difference- a Big Difference - between a quality window and a low-bidder window. Cheap windows and untrained installers just aren't up to the job. Since 1957, we've operated with a 100% customer satisfaction policy."**

**—Einar Johanson, business**

*Founder*



**"Johanson's company...is revered in the Seattle area and is one of the longest-operating independently owned construction firms in the state... a true treasure, that man."**

**—Darrel Hay of The Seattle Times**



**Call For Your Free Estimate: (206) 362-4031**

**Supporting The PITA—J.D. Angiuli**



# Saturday, Sept. 3rd, 2022

**Registration beginning at 8am, Event #1 starts at 10am**

**\$7.00 from each entry generates the winner's purse (60%/40%)**

Purses will be equally divided among the classes and yardage groups.

**PITA daily fee = \$4.00 / WSPITA fee per event = \$2.00**

---

## **Event #1 100 16 yard Targets**

3 classes (A, B, C)

Entrance fee; targets & cash purse.....\$37.00

### **Options:**

Class Purse (1 pay every 5 entries — High Gun).....\$10.00

Lewis Class (60%/40% 2 Groups).....\$10.00

---

## **Event #2 100 Handicap Targets**

Yardage Groups: 19 to 22.5; 23 to 25.5 & 26 to 27

Entrance fee; targets & cash purse.....\$37.00

### **Options:**

WSPITA Magnum (no minimum entries).....\$14.00

Yardage Purse 1 pay every 5 entries.....\$10.00

Lewis Class (60%/40% 2 Groups).....\$10.00

Evergreen Mini Magnum.....\$8.00

---

## **Event #3 50 Pair Doubles**

3 classes (A, B, C)

Entrance fee; targets & cash purse.....\$37.00

### **Options:**

Class Purse (1 pay every 5 entries — High Gun).....\$10.00

Lewis Class (60%/40% 2 Groups).....\$10.00

Nine Washington Locations

**TACOMA • PUYALLUP  
AUBURN • EVERETT • SEQUIM  
YAKIMA • TRI-CITIES  
SEATTLE/EASTSIDE  
NO. SNOHOMISH CO.**



We **GUARANTEE**  
the Quality of Our Work

*"Great Service is in your neighborhood"*

| Chip Repair  | Replacement   | Mobile Service   |
|--|---|--|
| <b>Tacoma</b><br>2609 S. Tacoma Way<br>Tacoma WA 98409<br>253-471-9000 | <b>Auburn</b><br>2401 Auburn Way N.<br>Auburn, WA 98002<br>253-939-7550   | <b>Puyallup</b><br>430 N. Meridian<br>Puyallup, WA 98371<br>253-848-9666 |
| <b>Sequim</b><br>391 W. Washington<br>Sequim, WA 98382<br>360-681-6633 | <b>Tri-Cities</b><br>1603 W. Lewis St.<br>Pasco, WA 99301<br>509-582-7400 | <b>Yakima</b><br>401 W. Walnut St.<br>Yakima, WA 98902<br>509-759-7484   |
| <b>Everett</b><br>Mobile Location<br>425-349-4400                      | <b>Seattle/Eastside</b><br>Mobile Location<br>425-455-0616                | <b>N. Snohomish Co.</b><br>Mobile Location<br>360-474-0800               |





# Sunday, Sept. 4th, 2022

**Registration beginning at 8am, Event #4 starts at 10am**

**\$7.00 from each entry generates the winner's purse (60%/40%)**

Purses will be equally divided among the classes and yardage groups.

**PITA daily fee = \$4.00 / WSPITA fee per event = \$2.00**

---

## **Event #4 50 Pair Doubles**

3 classes (A, B, C)

Entrance fee; targets & cash purse.....\$37.00

### **Options:**

Class Purse (1 pay every 5 entries — High Gun).....\$10.00

Lewis Class (60%/40% 2 Groups).....\$10.00

---

## **Event #5 100 16 yard Targets**

3 classes (A, B, C)

Entrance fee; targets & cash purse.....\$37.00

### **Options:**

Class Purse (1 pay every 5 entries — High Gun).....\$10.00

Lewis Class (60%/40% 2 Groups).....\$10.00

---

## **Event #6 100 Handicap Targets**

Yardage Groups: 19 to 22.5; 23 to 25.5 & 26 to 27

Entrance fee; targets & cash purse.....\$37.00

### **Options:**

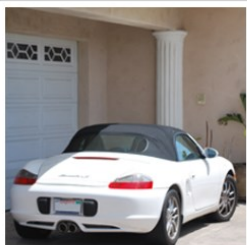
WSPITA Magnum (no minimum entries).....\$14.00

Yardage Purse 1 pay every 5 entries.....\$10.00

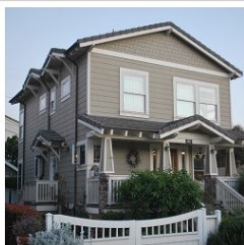
Lewis Class (60%/40% 2 Groups).....\$10.00

Evergreen Mini Magnum.....\$8.00

# John Gustafson Insurance



Auto Quote



Home Quote



Motorcycle Quote

## Call Us! 253-891-3030

Representing



**PEMCO**  
Insurance



Insurance™

A Liberty Mutual Company



GeoVera

**National General** >>  
Insurance



Ohio National  
Financial Services.  
*Life changes. We'll be there.™*

Phone: 253-891-3030

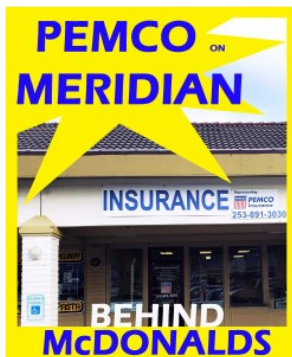
Fax: 253-891-2323

Email: [johnf@agent694.com](mailto:johnf@agent694.com)

**Our Office Location:**

4621 S Meridian STE A815

Puyallup WA 98373



# Monday, Sept 5th, 2022

**Registration beginning at 8am Event #7 starts at 10am**

**\$7.00 from each entry generates the winner's purse (60%/40%).**

Purses will be equally divided among the classes and yardage groups.

**PITA daily fee = \$4.00 / WSPITA fee per event = \$2.00**

---

## **Event #7 100 Handicap Targets**

Yardage Groups: 19 to 22.5; 23 to 25.5 & 26 to 27

Entrance fee; targets & cash purse.....\$37.00

Options:

WSPITA Magnum (no minimum entries).....\$14.00

Yardage Purse 1 pay every 5 entries.....\$10.00

Lewis Class (60%/40% 2 Groups).....\$10.00

Evergreen Mini Magnum.....\$8.00

---

## **Event #8 100 Handicap Targets**

Yardage Groups: 19 to 22.5; 23 to 25.5 & 26 to 27

Entrance fee; targets & cash purse.....\$37.00

Options:

WSPITA Magnum (no minimum entries).....\$14.00

Yardage Purse 1 pay every 5 entries.....\$10.00

Lewis Class (60%/40% 2 Groups).....\$10.00

Evergreen Mini Magnum.....\$8.00

---

### **PITA Registration Certificate**

This certifies that Evergreen Sportsmen's Club has been authorized to hold a registered shoot July 2nd, 3rd, and 4th 2022. The Pacific International Trapshooting Association rules will govern this shoot. Scores will be included in the official records. This is an invitational shoot. Management reserves the authority to reject, refund or disqualify any contestant who, in our judgment, interferes with the conduct, accuracy or sportsmanship and or harmony of the shoot.

**Evergreen Management has the right to change the program, all or in part, without notice.**

## **Got Questions?**

Feel free to contact John Gustafson at 253-307-4530 with any questions you may have in regards to the program. You can also reach John if you would like to run an ad!

**Camping RV reservations** can be reserved by going to [www.shootevergreen.com](http://www.shootevergreen.com) and clicking on the link for RV reservations that will take you to the [campspot.com](http://campspot.com)

**Program By John and Jeremy Gustafson**

## **Evergreen Sportsmen's Club Board**

**President:** Dan Solie

**Vice President:** Chris Doniguian

**Secretary/Treasurer:** Frank Mammano

**Board Members:**

Robert Rudolph

Tim Davidson

Ron Smith

Edward Vergara

Jim Bottorff

**Trap Chairman:** John Gustafson